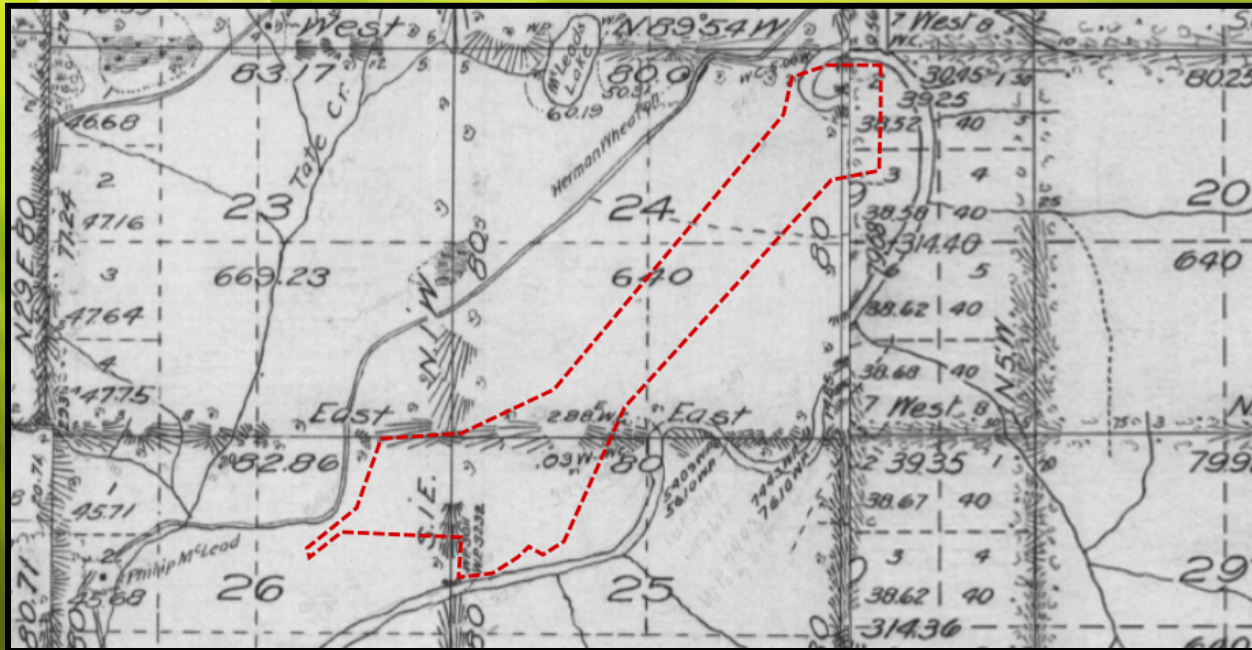




CULTURAL RESOURCE STUDY



STUDY COMPONENTS

- Conduct a literature review to determine cultural and historical context for determining site significance
- In cooperation with tribes, conduct an ethnographic inventory to locate properties of cultural or religious significance
- Prepare a draft historic properties management plan (HPMP)

LITERATURE REVIEW & BACKGROUND RESEARCH

- Identified previously documented archaeological and historic resources within the study area to help establish context for resource significance
- Considered three major types – archaeological, ethnographic, and historic. Also included consideration of paleontological resources

INFORMATION SOURCES

- Review of environmental data for the project vicinity
- Database search at the Washington State Department of Archaeology and Historic Preservation for known sites in the immediate area
- Review of previous investigations in the local area
- Review of relevant background archaeological and historical literature
- A reconnaissance level project area visit (*pictured to the right*)



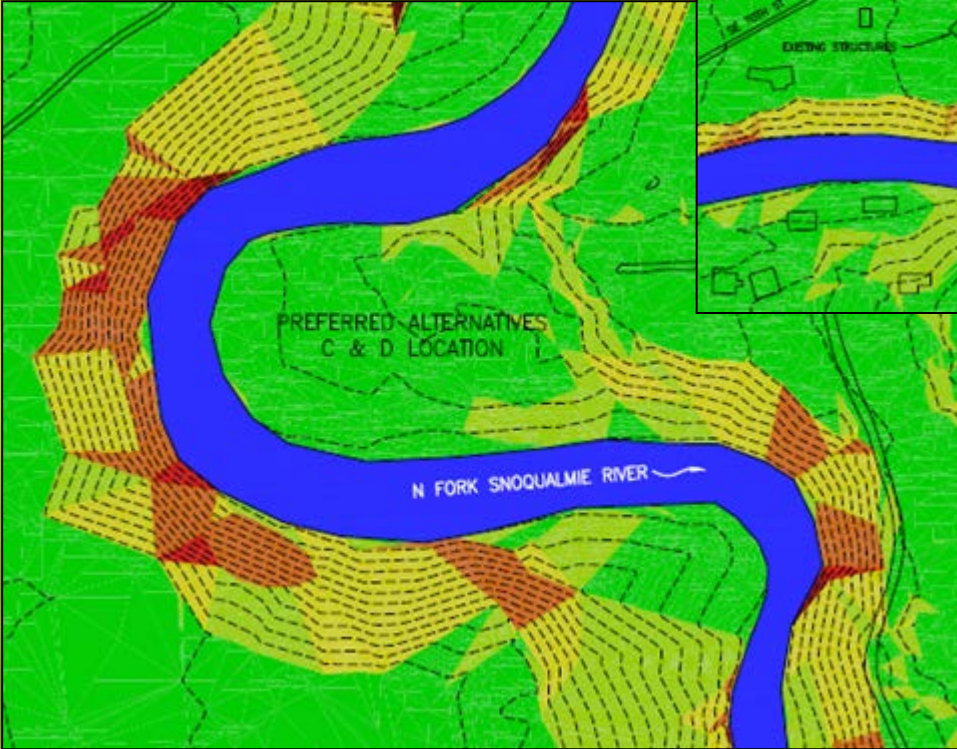
STUDY CONCLUSIONS

- Background research and a site visit did not identify any recorded historic properties
- Review of historical maps, photographs, geological reports, and other information indicate a low potential for historic properties
- Literature review and an initial site visit did not identify any archaeological sites
- Archaeological sites, if present, would be found relatively near the ground surface
- Intact native soils are not expected to be present in the majority of the Project due to the absence of depositional environments and extensive timber harvesting that has disturbed near-surface sediments



SLOPE ANALYSIS

Intake Location (below)



Tailrace Exit (above)

STUDY RECOMMENDATIONS

- A field inventory, to be completed prior to Project construction, to identify any historic structures or archaeological resources at the site of ground disturbing activities
- Revision of the draft HPMP and completion of a final HPMP, as appropriate
- Continued on-going tribal consultation regarding sites of cultural or religious significance

TRIBAL CONSULTATION

- Black Canyon Hydro continues to consult with the Snoqualmie Nation and Tulalip Tribes regarding properties of cultural or religious significance
- The tribes and DAHP will be consulted regarding the definition of the Area of Potential Effects (APE) for the Project now that study results are available
- Consultation is an on-going process

DRAFT HPMP

- Although no Historic Properties have been identified, a generic, draft Historic Properties Management Plan has been developed
- Further development of the draft HPMP is dependent upon future field investigations
- Any final Project-specific HPMP would be submitted to the Snoqualmie Nation and Tulalip Tribes, King County, DAHP, and FERC, or other interested parties

NEXT STEPS

- Field investigations in the Project APE to assess potentials for archaeological and historical resources prior to construction
- Evaluate sites for National Register, if present
- Continue tribal consultation
- Prepare HPMP, as appropriate
- Continue efforts to conduct ethnographic survey, submit any results